

back to the 15th century, when the golden period of Chinese carpentry began. Every piece is displayed to emphasize the use of individual pieces and how classical Chinese work has influenced current Chinese and Western trends.

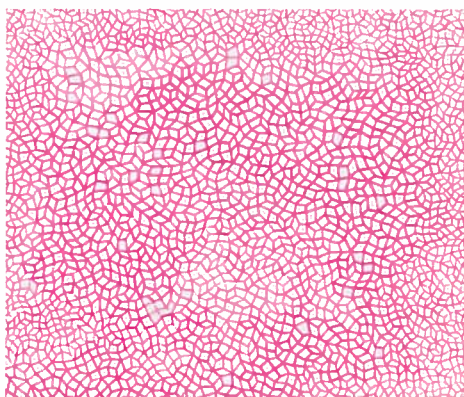
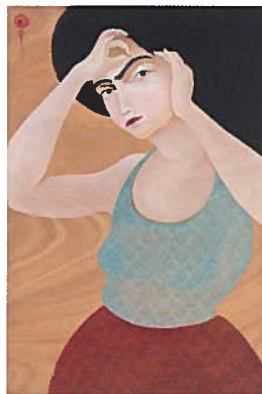
The owner of Haven Collection, Dr. Chu-Pak Lau, is a cardiologist in Hong Kong. With his enthusiasm for Tang poems and ancient Chinese literature, Dr. Lau has fostered a broad understanding of Ming dynasty culture and civilization and has been collecting Chinese antiques since 1991. He is one of the most renowned collectors in Hong Kong. He named his own art space Haven Gallerie after a poem by Tao Yuanming (365–427 AD), the greatest poet of the Six dynasties (c.220–589 AD).

This year, Dr. Lau will publish *Classical Chinese Furniture in Huanghuali from the Haven Collection*, a book depicting the Ming furniture in relationship to Ming way of life. It features 95 items in seven categories of Chinese furniture, including bed, chair, table, cabinet, box, stand, and screen, and small leisure items, and illustrated by prints, painting, and *famille noire* (*sancai*) from the Ming dynasty.

By focusing on how Chinese furniture from the Ming dynasty has influenced our present life, Dr. Lau not only pays attention to the presentation of *Living in Ming*, but also offers a cross-regional opportunity for cultural exchange. A two-day academic program, namely, *International meeting on Classical Chinese Furniture*, will be hosted on October 4 and 5, 2016, at the University Museum and Art Gallery, The University of Hong Kong.

University Museum and Art Gallery, The University of Hong Kong is at 2/F, Tsui Tsin Tong Building, 90 Bonham Road, Pokfulam.

...



**Clockwise from left: Yayoi Kusama, *Infinity Nets (H10)*, 2000, acrylic on canvas, 15 x 18 in.**

**Hayv Kahraman, *Prelude*, 2011, oil on panel, 36 x 24 in.**

**Li Shurui, *I am not ready...*, 2013, acrylic on canvas, 98 x 98 in. All from the *No Man's Land* exhibition at the National Museum of Women in the Arts.**

### THE UNITED STATES

#### Advocate For Women Artists

The National Museum of Women in the Arts (NMWA) is presenting the exhibition *No Man's Land: Women Artists from the Rubell Family Collection* on view from September 30, 2016, through January 8, 2017. From 16 countries across five continents, 37 contemporary artists use their aesthetically diverse work to address varied political and intellectual themes. The presentation is organized by the Rubell Family Collection (RFC)/Contemporary Arts Foundation, Miami, in collaboration with NMWA. The exhibition in Washington, D.C. centers on the process of making as well as images of the female body—both topics that extend from the feminist art movement of the 1970s.

Among the celebrated artists whose work is featured

in the exhibition are Cecily Brown, Marlene Dumas, Isa Genzken, Yayoi Kusama, Wangechi Mutu, Elizabeth Peyton, Dana Schutz, Mickalene Thomas, and Rosemarie Trockel.

This highly focused selection of 59 works concentrates on painting and sculpture. These media are among the oldest and traditionally most revered art forms, yet in the hands of many contemporary artists they are avenues for experimentation, play, and subversion.

*No Man's Land* brings together artists new to the Rubell Family Collection and those whose works they began collecting decades ago. Speaking about the D.C. iteration of the exhibition, Mera Rubell says, "It is especially meaningful for us to have *No Man's Land* open in our nation's capital around the time when women's leadership in all arenas is front and center in the public consciousness."

"We are thrilled to be the first traveling venue for *No Man's Land* which premiered in Miami last December," said NMWA director Susan Fisher Sterling. "We have truly enjoyed collaborating with the Rubell Family Collection—one of the largest and most diverse privately held contemporary collections in the world. From the original exhibition, which extended over 45,000 square feet, our curators worked with the RFC to create a tightly focused exhibition centered on the body and the process of making. These themes define some of the most compelling works made by contemporary women artists."

The National Museum of Women is at 1250 New York Ave NW, Washington, D.C. 20005. Tel: (1-202) 783 5000/ (1-800) 222 7270.

...

### TAIWAN

#### Death And Sublimity Of Life

TKG+ Projects is presenting *Universe of Possibilities*, a solo exhibition by Charwei Tsai at Tina Keng Gallery. The exhibition marks the first manifestations of Tsai's latest ventures in photography, video, installation, and publishing work within the experimental setting of the project space.

Central to Tsai's practice is her use of ephemeral objects to reflect upon the transient nature of human perception. The exhibition extends this examination to the immense possibility of human mind to reverse perceptions of seemingly permanent entities or situations. In the photographic series, *Universe of Possibilities* (2016), what at first glance appear to be planets turn out to be close-ups of off-casts that had been discarded in mass quantities by commercial fishing boats along the coast of Central Vietnam.

*Bardo* (2016) is a video